

DZ

DAFNIE
ZEA DUNNERSTICK

PORTFOLIO

ZEASIGNS.COM

**CASCADAS
MALL**



**ITSMO
UNIVERSITY**



**FITNESS ONE
CAYALA**

**MAYAN
PALACE**



**HYATT
HOTEL**



SOHO



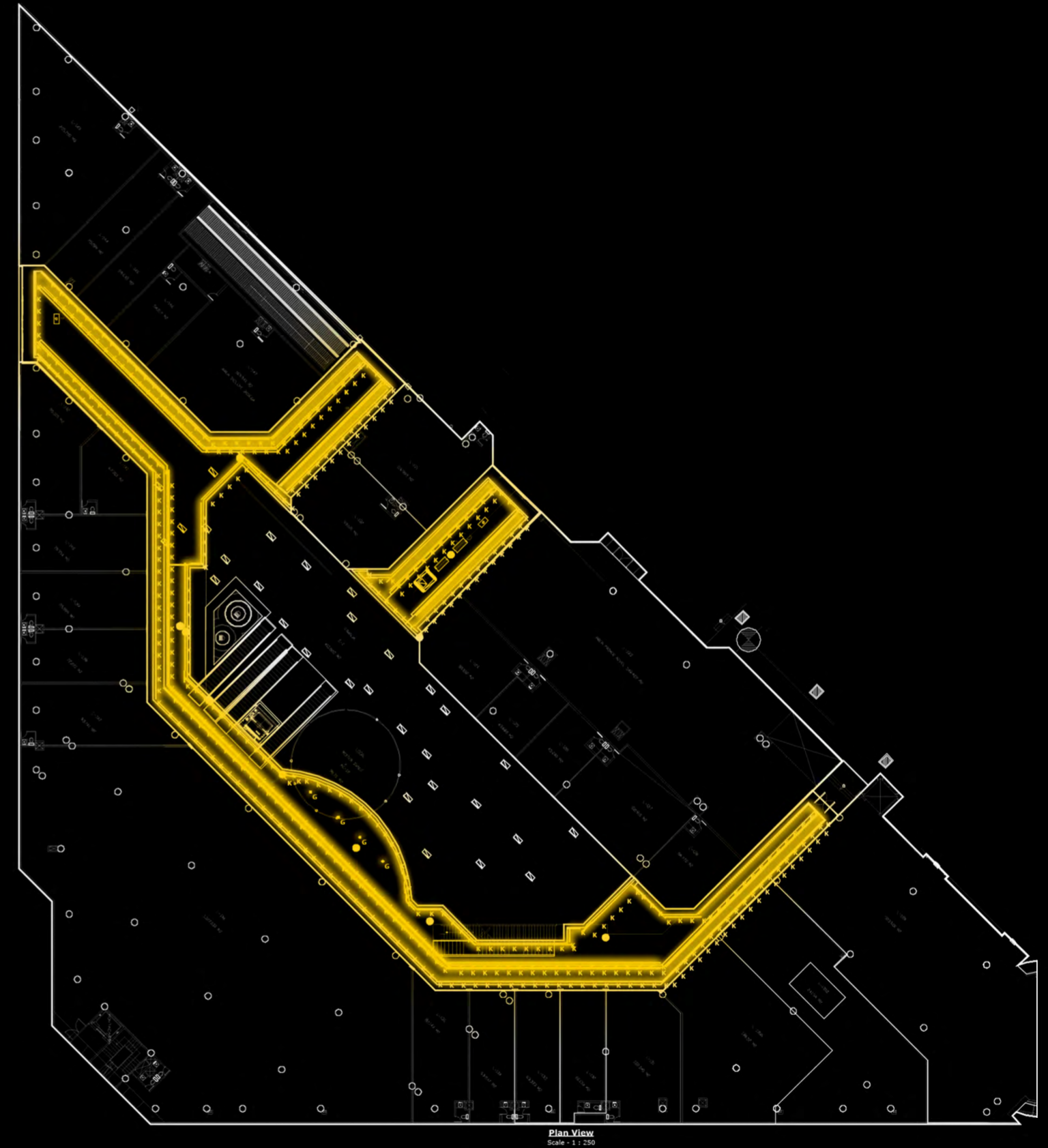
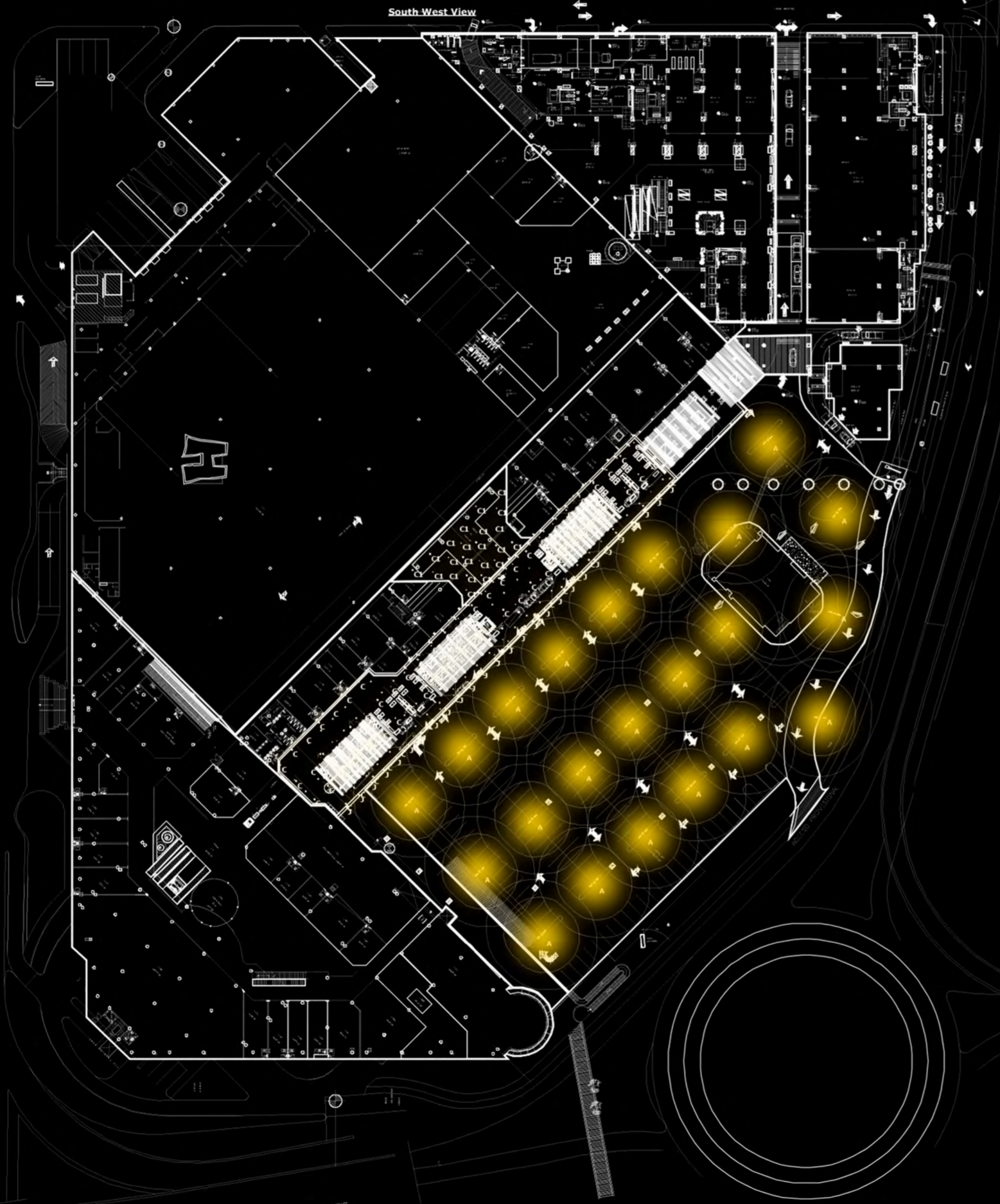
CASCADAS MALL

Las Cascadas opened its doors to the public on March 21, 2003. The construction of the building was carried out over a period of ten months and cost \$40 million. The property consists of three levels of offices, commercial establishments, a food court, and parking for 1,500 vehicles, of which 1,100 are located in the basement and 400 outside. It was seriously damaged after a fire in 2015, and the remodeling and revitalization consisted of new floors, panoramic elevators, new ceilings with modern lighting design, and new facades for each shop store.



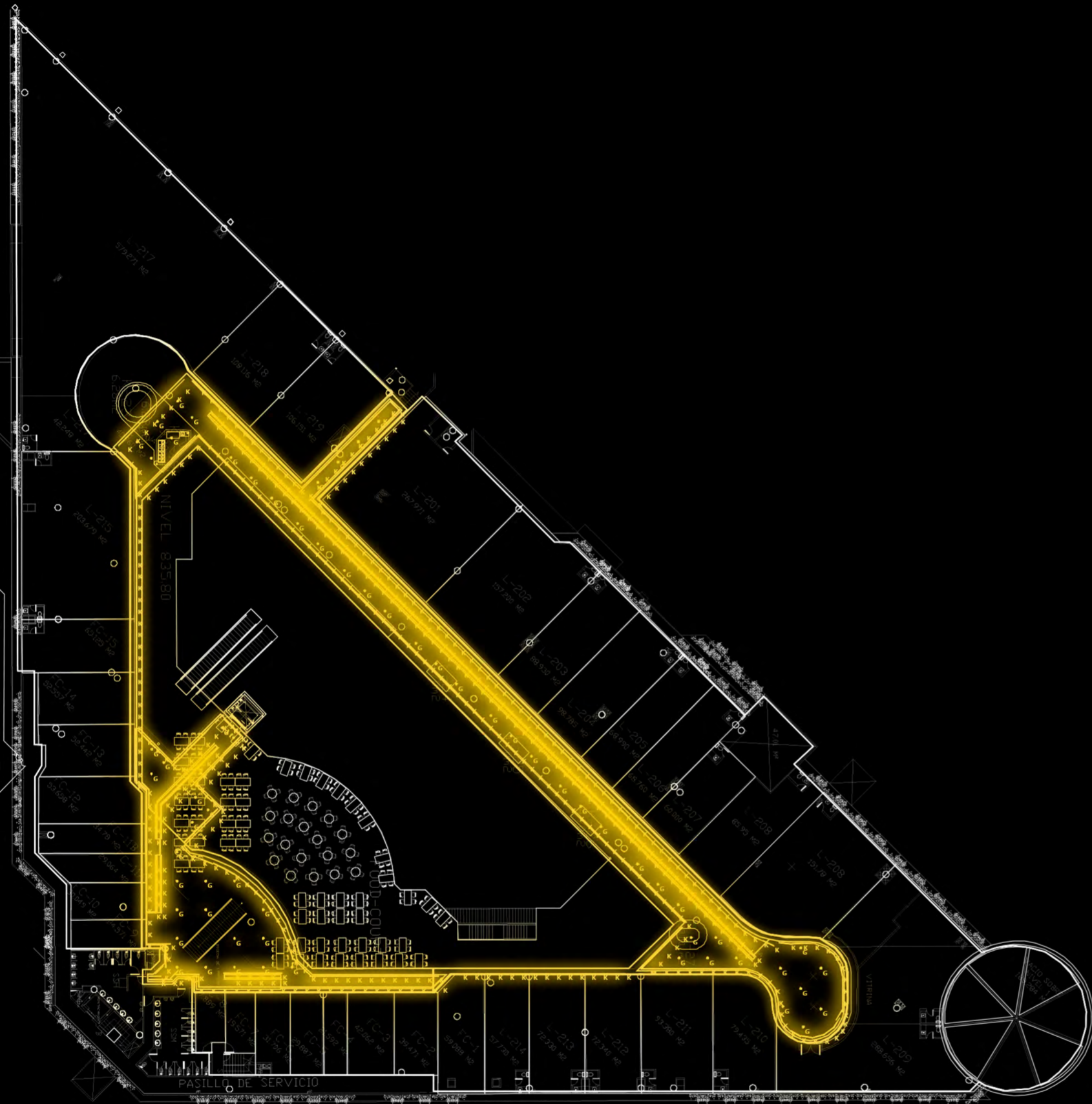
Render of the new design and more efficient parking lighting (LED)

CASCADAS MALL

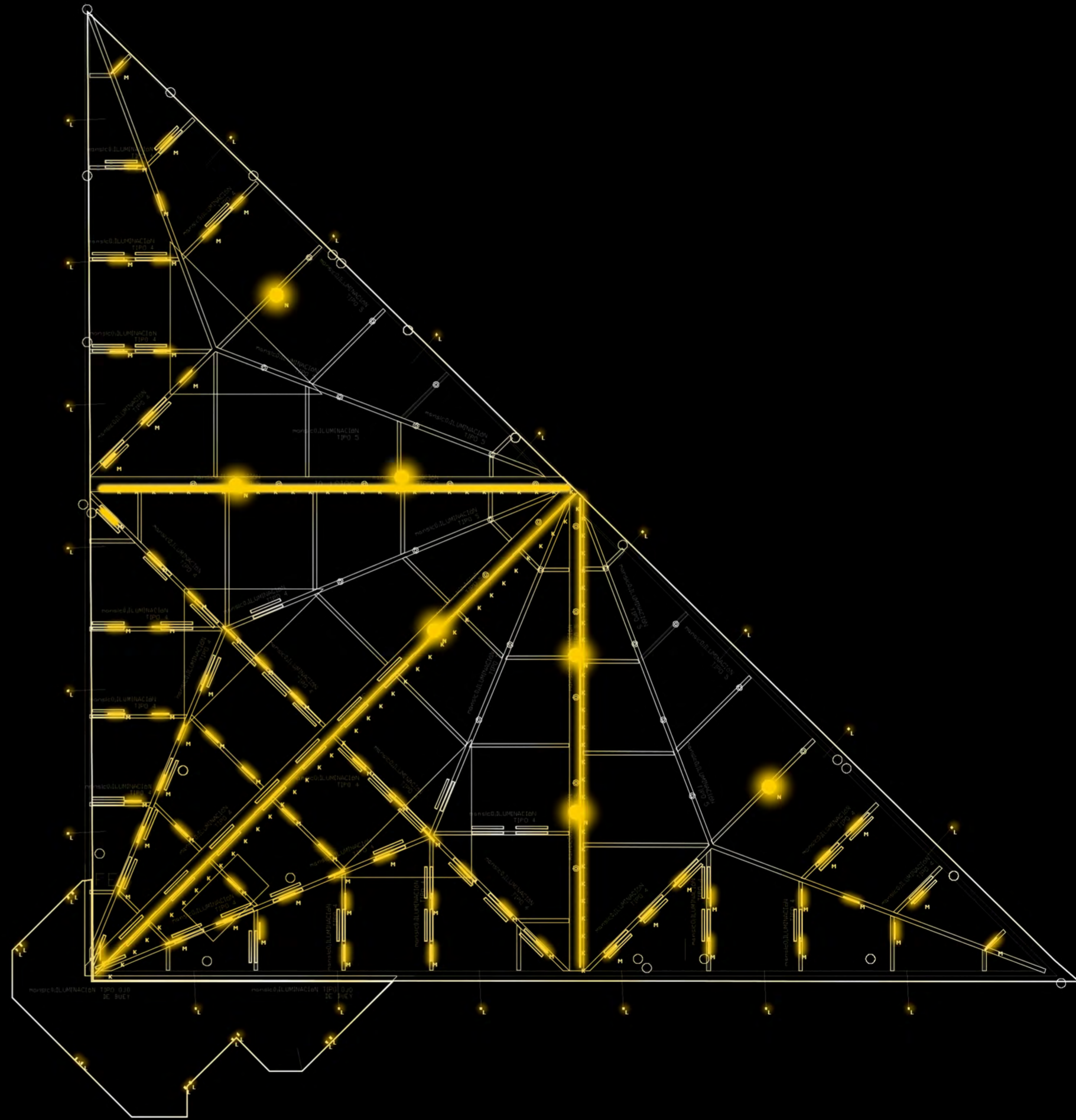


Exterior parking & first floor

CASCADAS MALL



Plan View
Scale - 1 : 250



Second floor & roof

CASCADAS MALL



Inset photo taken after remodelation

CASCADAS MALL



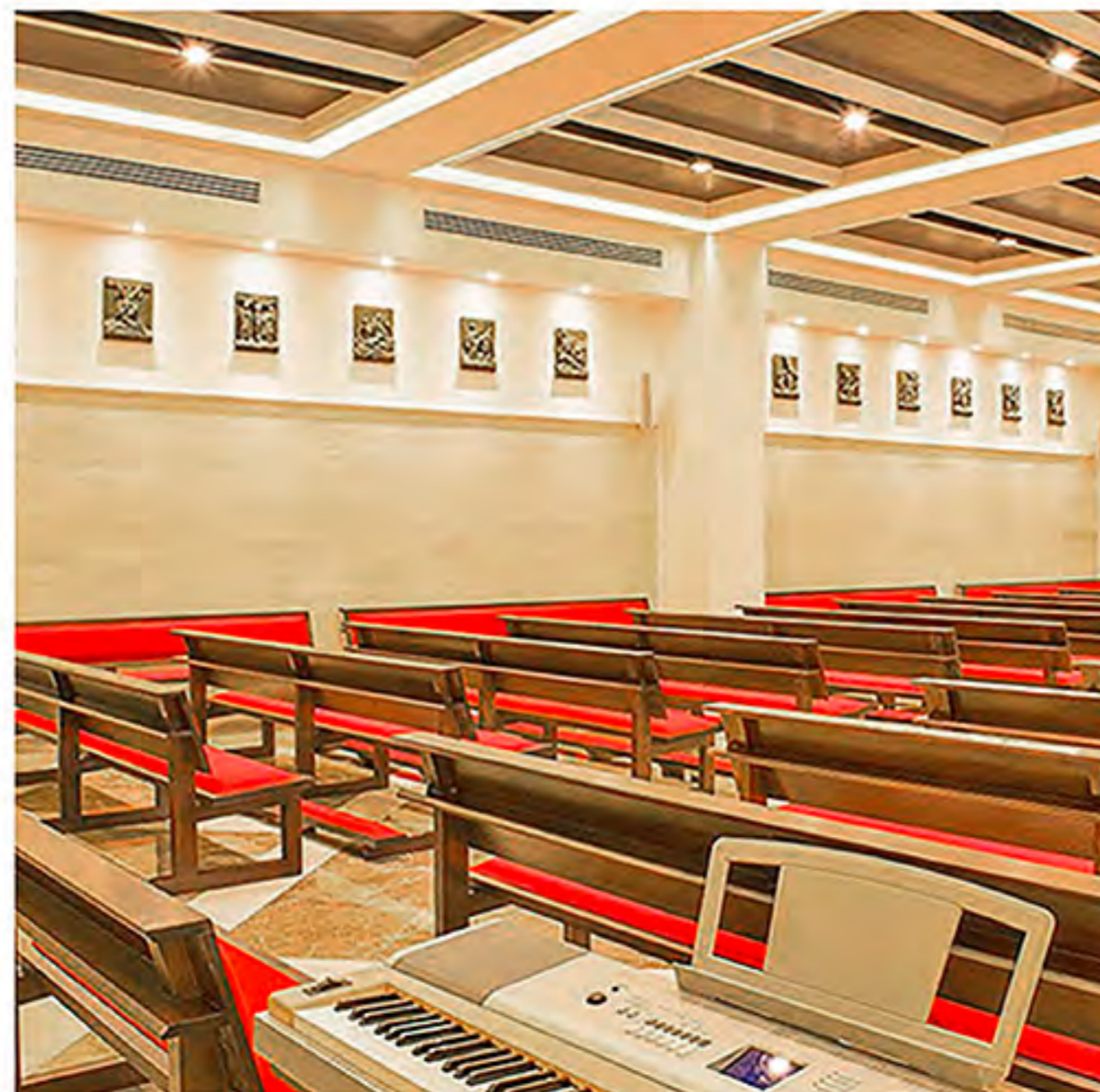
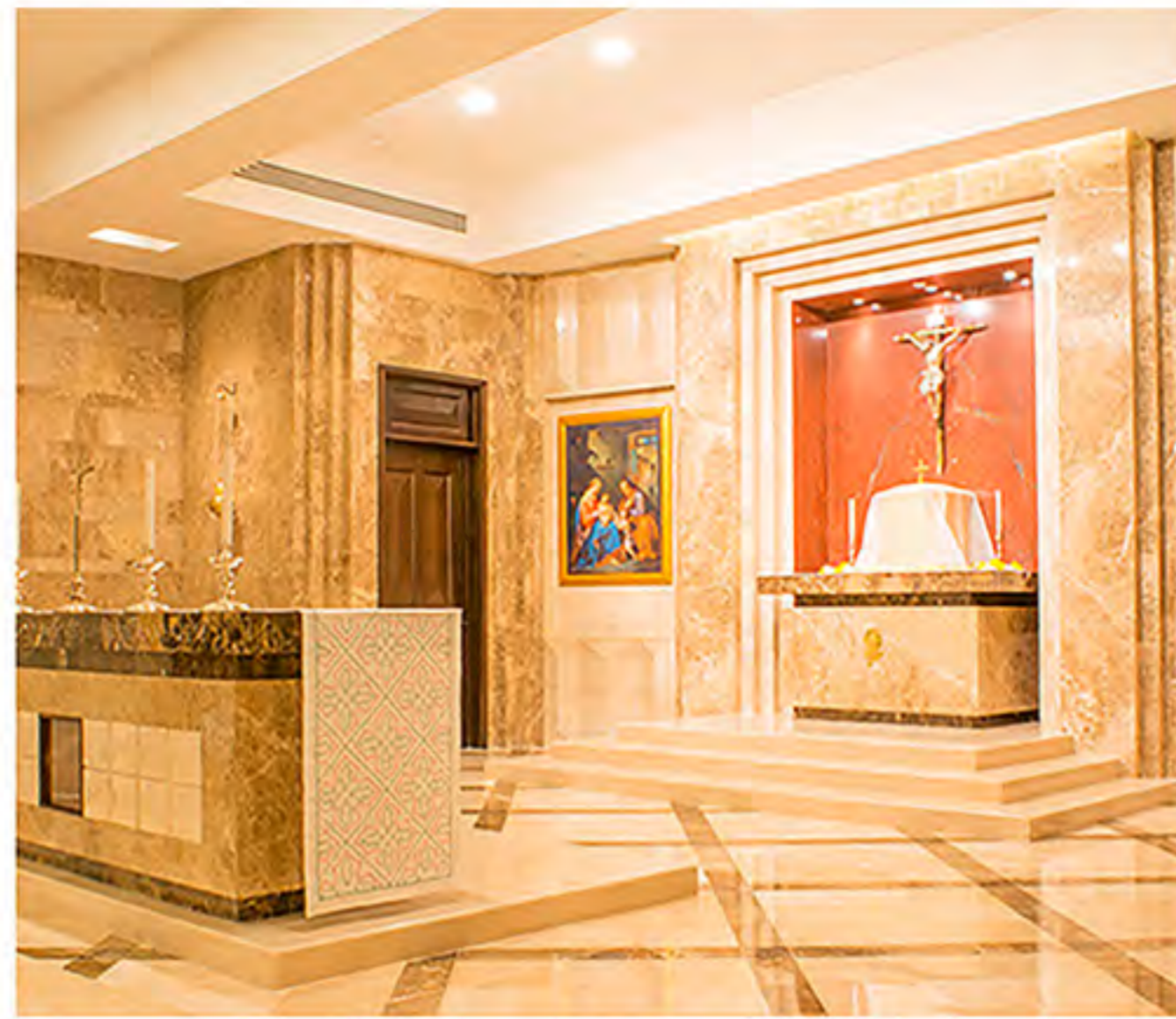
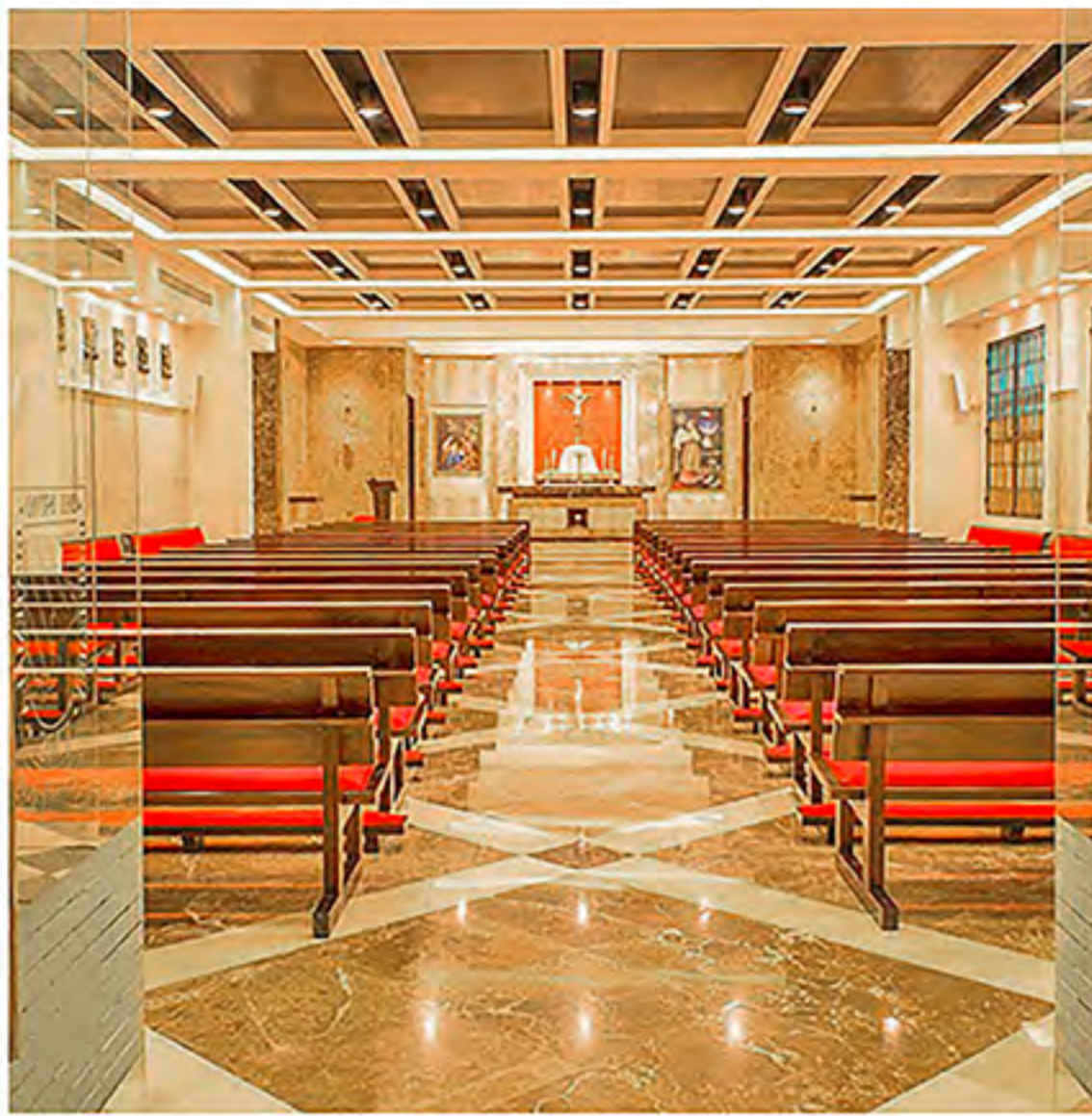
Inset photo taken before remodelation

CASCADAS MALL

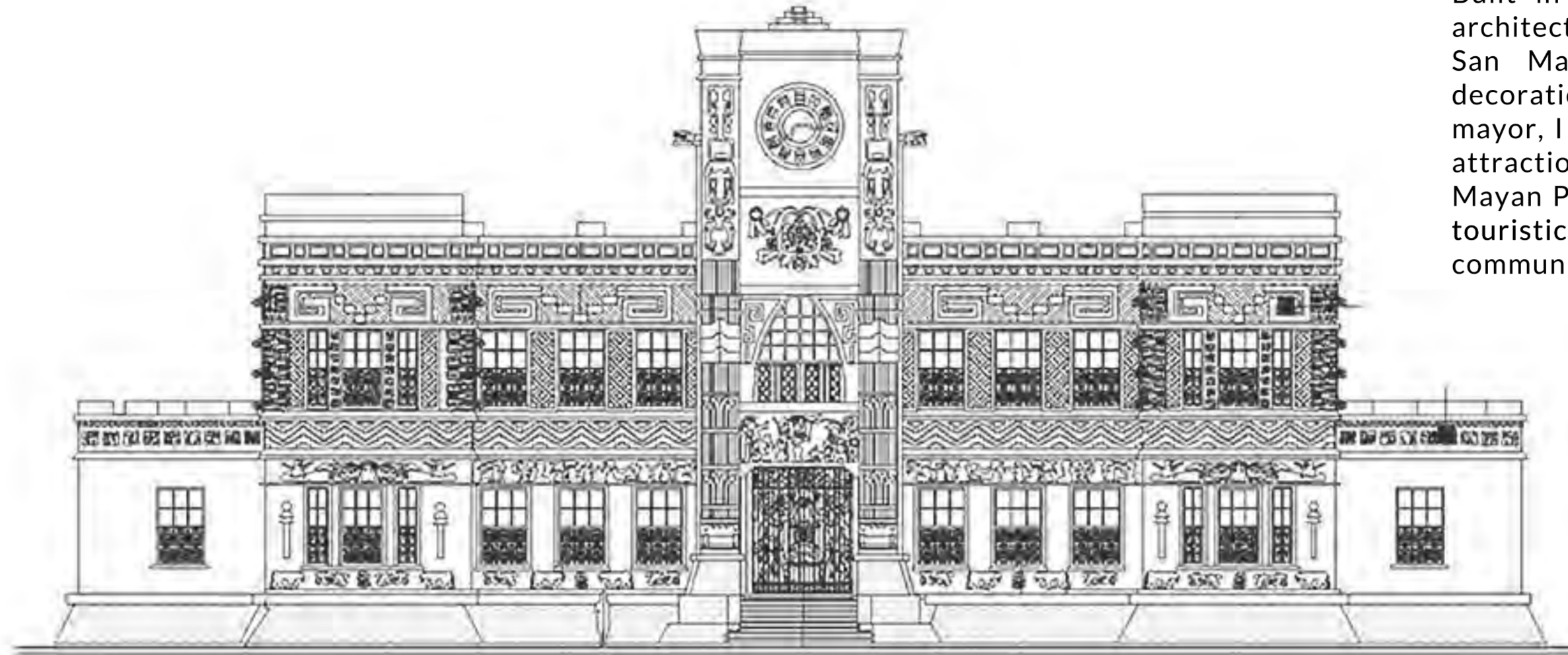




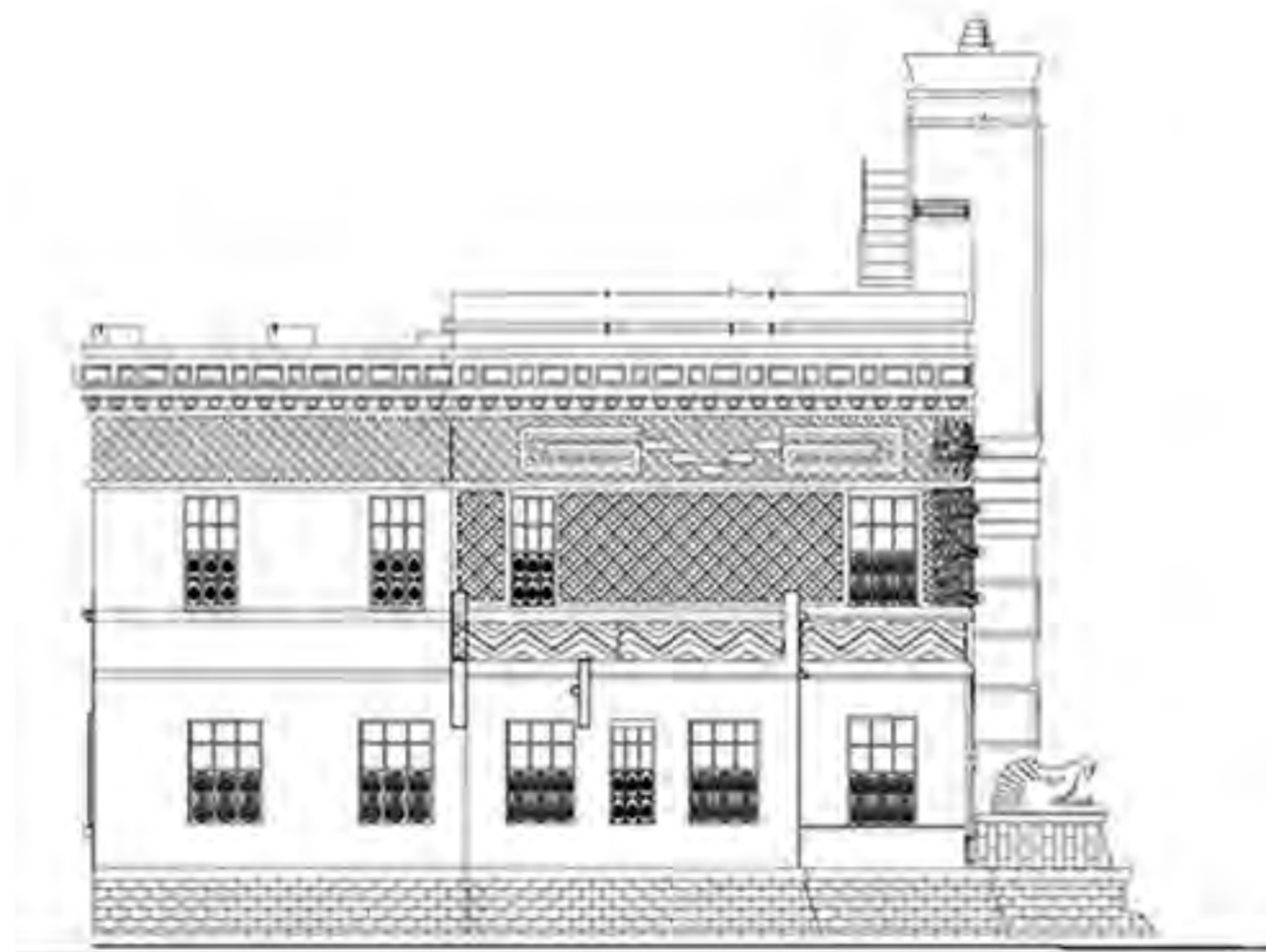
Creation of an important space for the Itsmo University of Guatemala. The lighting design is to facilitate meditation and prayer, with the interior including ceiling-to-floor marble around the altar. Everything is digital controlled to create several modes using efficient LED.



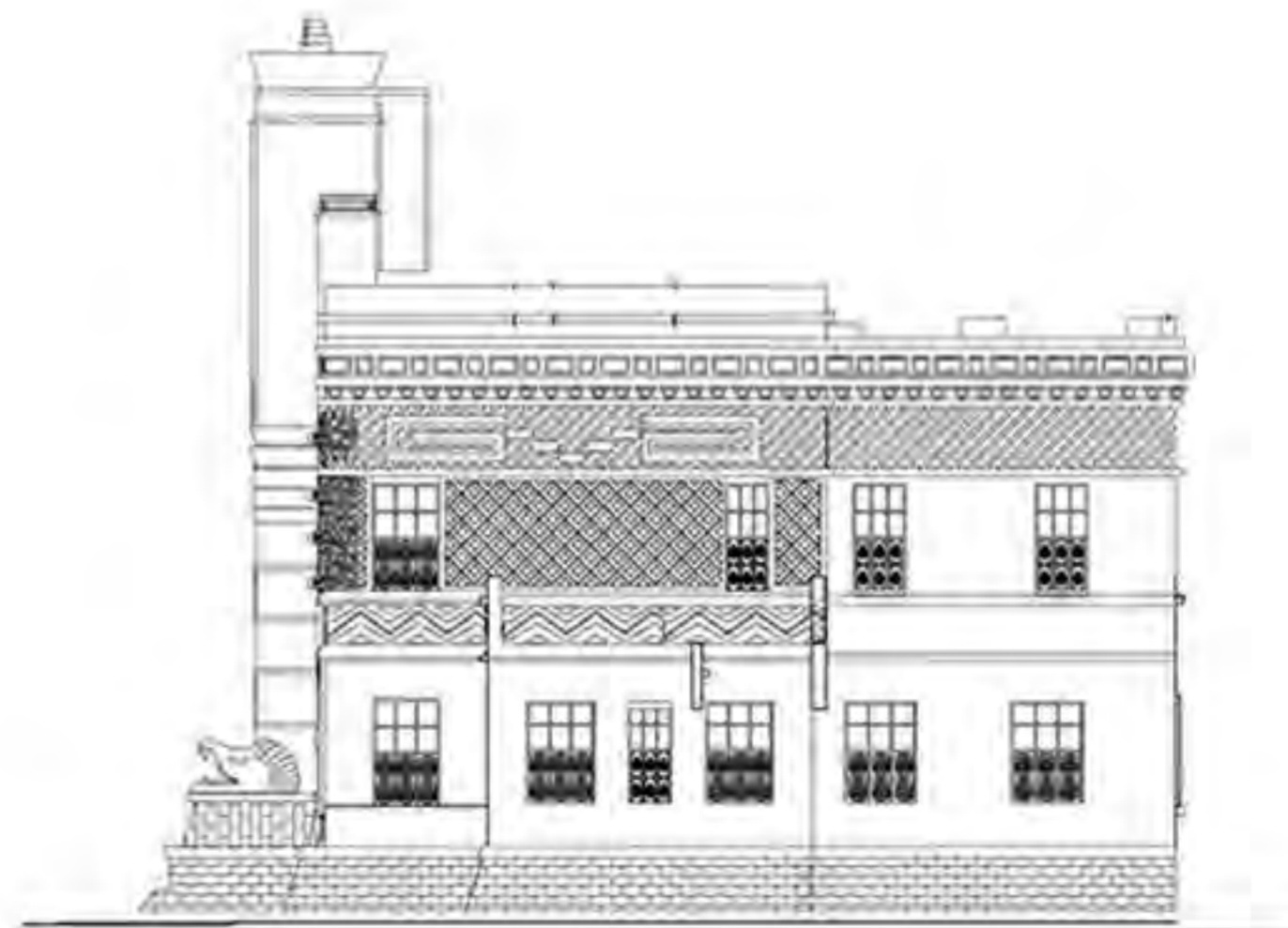
Itsmo University of Guatemala
final installation



Principal facade



North facade



South facade

Built in 1942, the Mayan Palace is an architectural icon of the municipality of San Marcos, due to its history and decoration details. Per request of the mayor, I re-did its lighting design to draw attraction to its importance in the city. Mayan Place has since become a renewed touristic spot and center for the community.

MAYAN PALACE

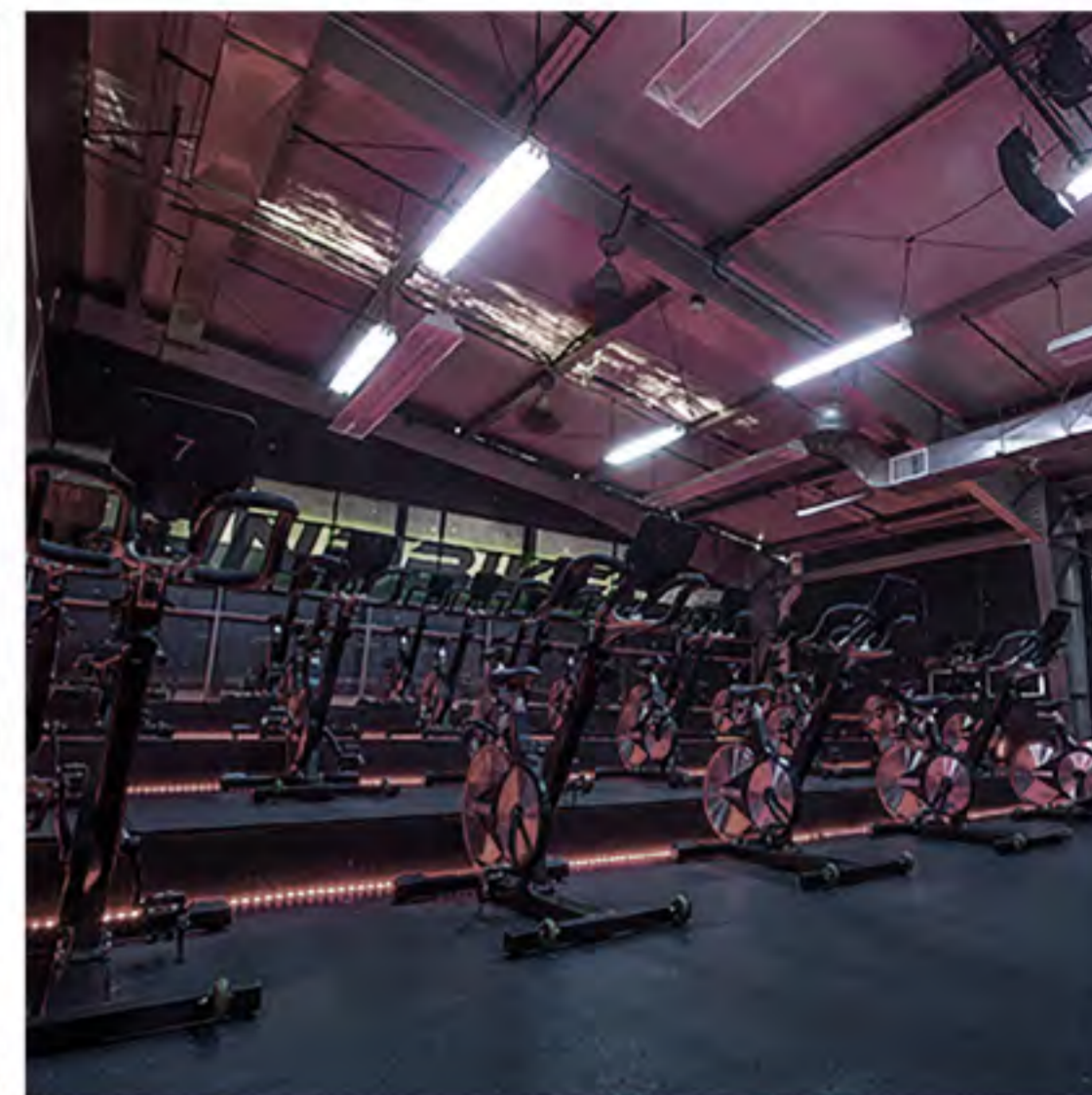
Pre-Installation design



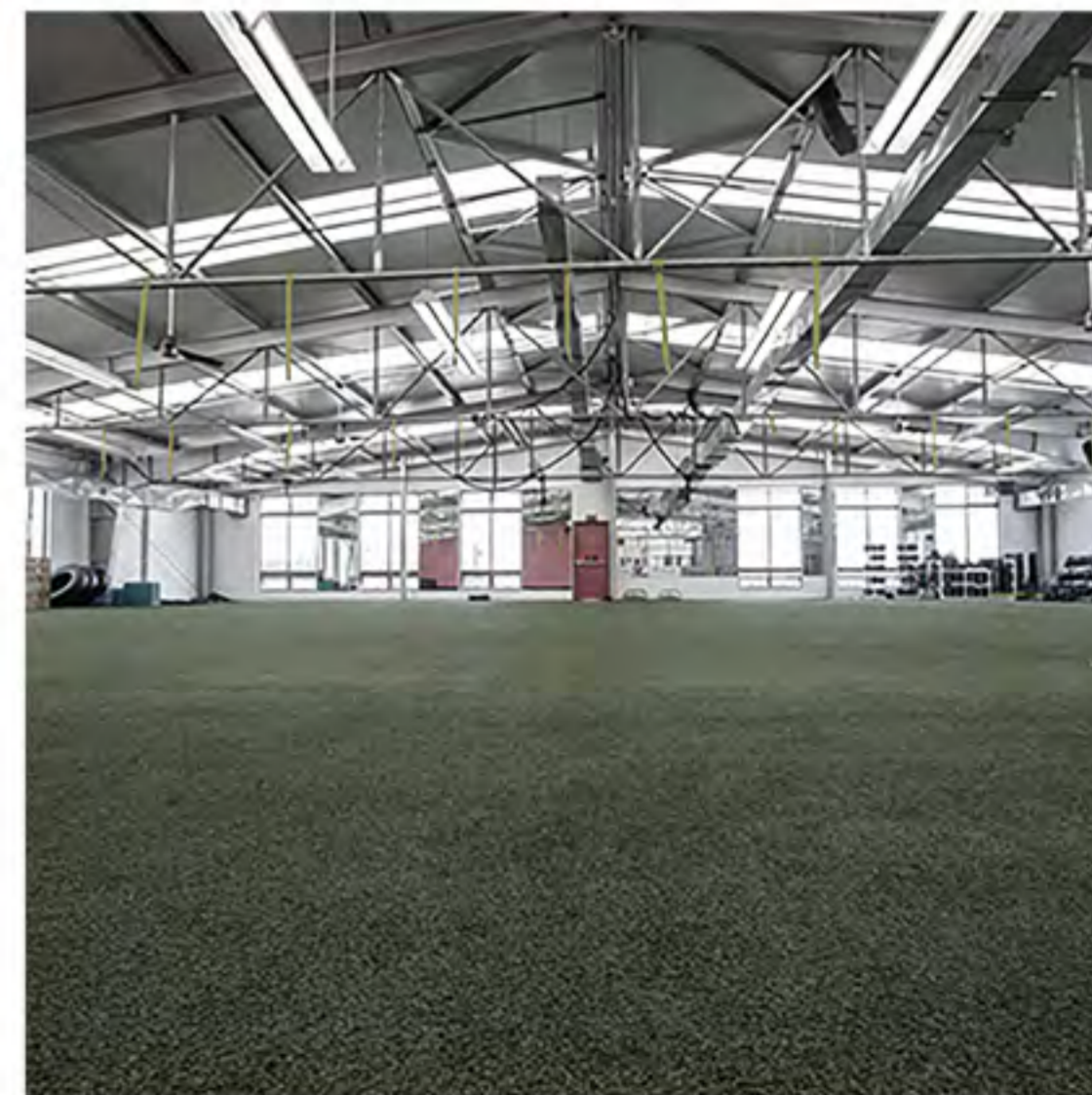
MAYAN PALACE

Families enjoying the palace after installtion





Fitness One Cayala is a luxury Guatemala City fitness center. The lighting focuses on exclusivity, safety and productivity. Solar panels were used for sustainability, along with natural light to open up the incredible views of the surrounding nature.

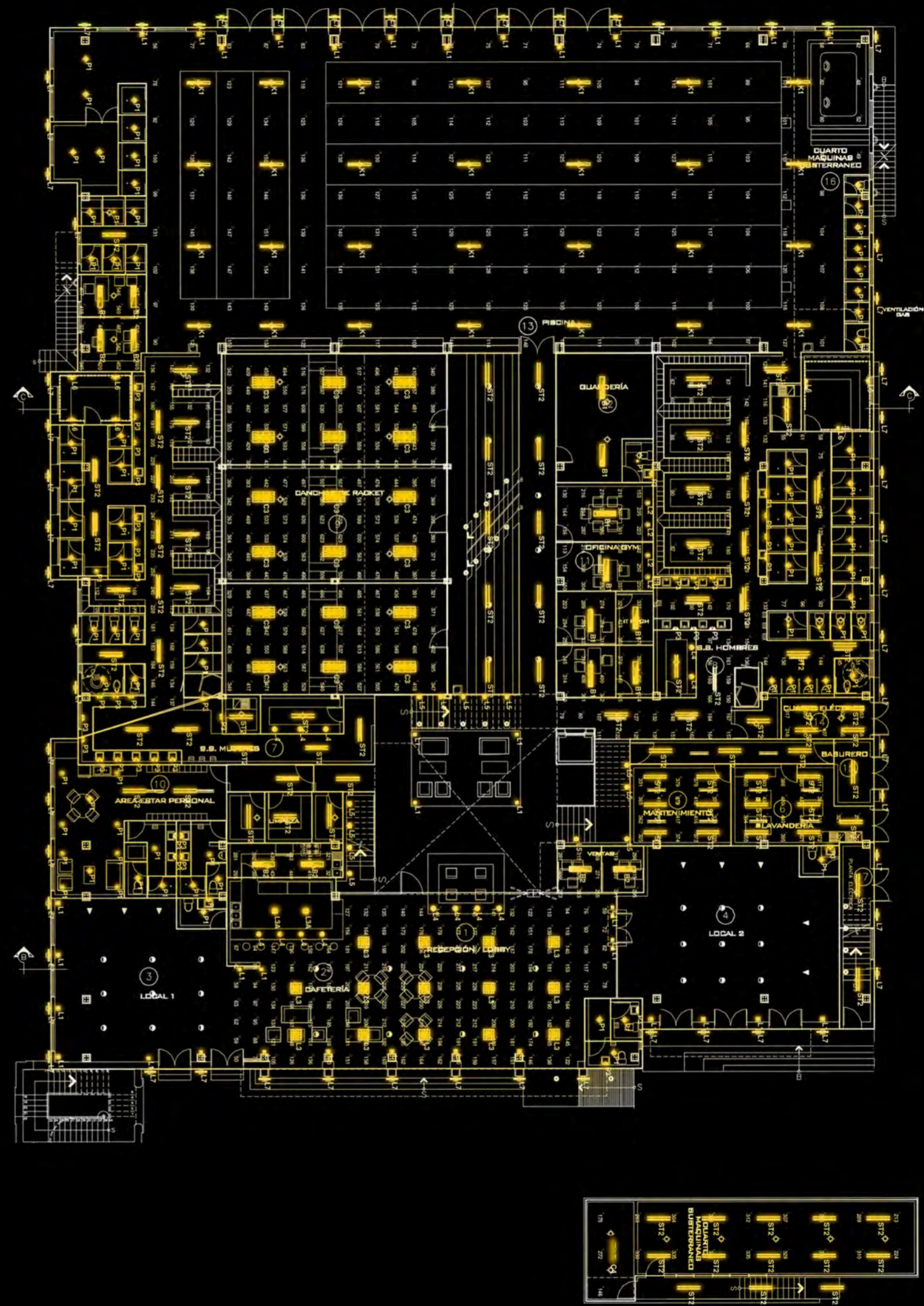


FITNESS ONE CAYALA

Second floor



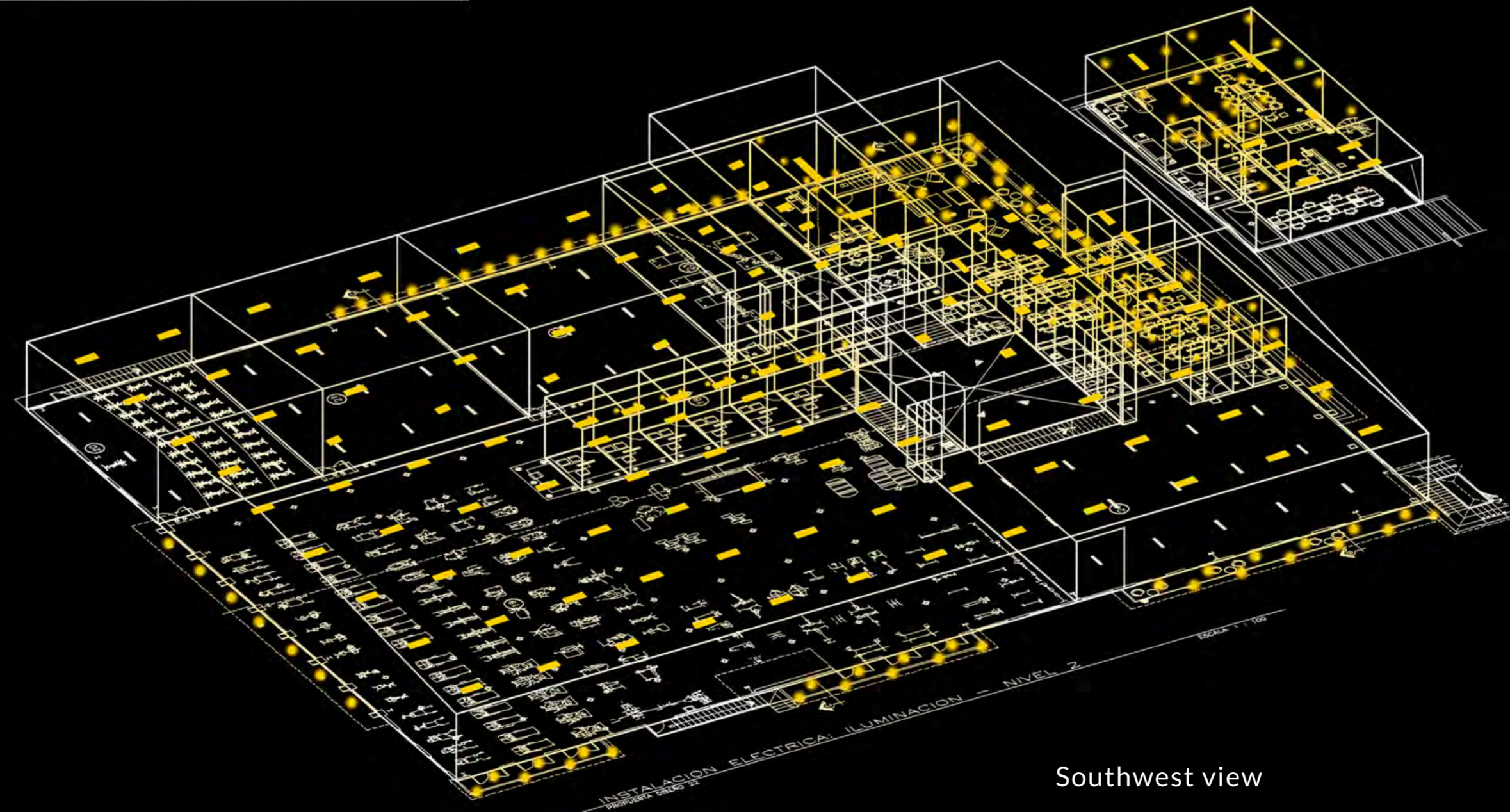
First floor



LUMINAIRE SCHEDULE									
Symbol	Label	Qty	Catalog Number	Description	Lamp	File	Lumens	LLF	Watts
	A1	16	LW-LUSIO-ES-BAY-2MS-NW-BAFY	Luminaria Lusio LED aluminio extruido disipador de calor, reflectores de moldesados de esmalte blanco	white LEDs	LW_LUSIO_ES_BAY_1_2M_S_NW_BAFY.ies	5300	0.85	60
	A2	70	LW-LUSIO-ES-BAY-2M-NW-BAFY	Luminaria Lusio LED aluminio extruido disipador de calor, reflectores de moldesados de esmalte blanco	white LEDs	LW_LUSIO_ES_BAY_1_2M_NW_BAFY.ies	10800	0.85	119
	B1	9	LSER14-40HLG-C-EDU / FK14	Luminaria LSER Serrano LED, Empotrada arquitectónica 1'x4'	1'x4' 40000K	5667.ies	Absolute	0.85	70.8
	B2	15	LSER14-40LWG-C-EDU / FK14	Luminaria LSER Serrano LED, Empotrada arquitectónica 1'x4'	1'x4' 40000K	5671.ies	Absolute	0.85	43.9
	D3	21	2D9LED-40K8-WFL45	6" LED DOWNLIGHT	LED	4877.ies	Absolute	0.80	21
	L2	31	LEDS-C4 DN-0521-N3-00	Luminaria de empotrar en cielo falso, color blanco, dirigible.	LED MR16 GU10	MR16 GU10 800 Series 3000K 25 deg.ies	Absolute	0.80	8
	L3	13	15-4722-54-M1	Luminaria decorativa LED FIT	LEDS 60x60 NW 45W	15-4722-54-M1 FIT-15215.ies	3867	0.60	45
	L3A	14	15-4723-54-M1	Luminaria decorativa LED FIT	LEDS 30 x 30 WW 20W	15-4723-54-M1 FIT-22809.ies	968	0.60	20
	P1	14	LEDS C4	Luminaria de sobrepone en losa, vidrio salinado	Ahorrador de 13W.	98218a.ies	0	0.80	15
	P3	6	PROGRESS F2707-09	Luminaria decorativa de pared	LED	98218a.ies	0	0.80	20
	F	3	LED C4 00-0052-AH-AH	Luminaria decorativa	LED	14885.IES	2600	0.85	33
	G1	37	DLPAR38	Downlight PAR38 para exterior	PAR38 LED Toshiba	98218a.ies	3200	0.80	21
	H1	29	P5641-30	P5641-30	PAR38 LED Toshiba	98218a.ies	3200	0.80	21

POWER DENSITY STATISTICS				
Name	# Luminaires	Total Watts	Area	Density
MEZANINE	35	898 W	171 m²	5 W/m²
TODO	243	13056.40 W	2518.94 m²	5.18 W/m²

STATISTICS						
Description	Symbol	Avg	Max	Min	Max/Min	Avg/Min
- COCINETA		294 lux	775 lux	59 lux	13.1:1	5.0:1
- SALA OFICINAS CENTRALES		102 lux	184 lux	58 lux	3.2:1	1.8:1
D - PASILLO		172 lux	284 lux	99 lux	2.9:1	1.7:1
E - OFICINA 1		254 lux	685 lux	49 lux	14.0:1	5.2:1
E - OFICINA 2		383 lux	722 lux	195 lux	3.7:1	2.0:1
E - OFICINA 3		259 lux	718 lux	94 lux	7.6:1	2.8:1
E - OFICINAS 4		318 lux	536 lux	106 lux	5.1:1	3.0:1
E - OFICINAS 5		235 lux	500 lux	77 lux	6.5:1	3.1:1
E - OFICINAS CENTRALES		304 lux	351 lux	270 lux	1.3:1	1.1:1
E - PRINCIPAL		145 lux	335 lux	67 lux	5.0:1	2.2:1
E - SESIONES		195 lux	459 lux	92 lux	5.0:1	2.1:1
H - AEROBICOS		284 lux	387 lux	201 lux	1.9:1	1.4:1
H - FUNCTIONAL		352 lux	451 lux	280 lux	1.6:1	1.3:1
H - MAQUINAS		425 lux	593 lux	265 lux	2.2:1	1.6:1
H - PILATES		317 lux	396 lux	192 lux	2.1:1	1.7:1
H - SPINNING		334 lux	432 lux	221 lux	2.0:1	1.5:1

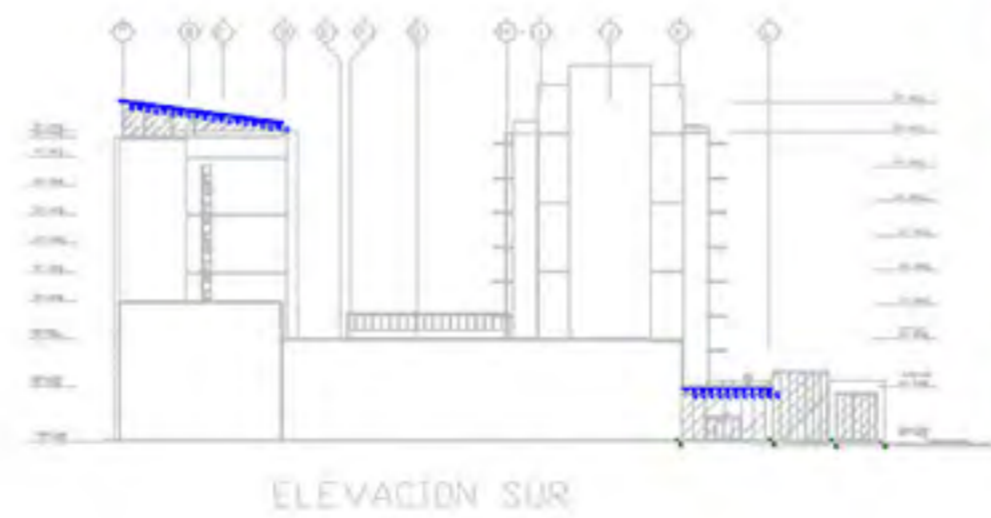


Southwest view

5

HYATT HOTEL

Located in the business district of old Cuscatlan, San Salvador, with a \$36.7 million dollar total construction investment. The property has 140 intended for the business, with 1,125 rooms in total.

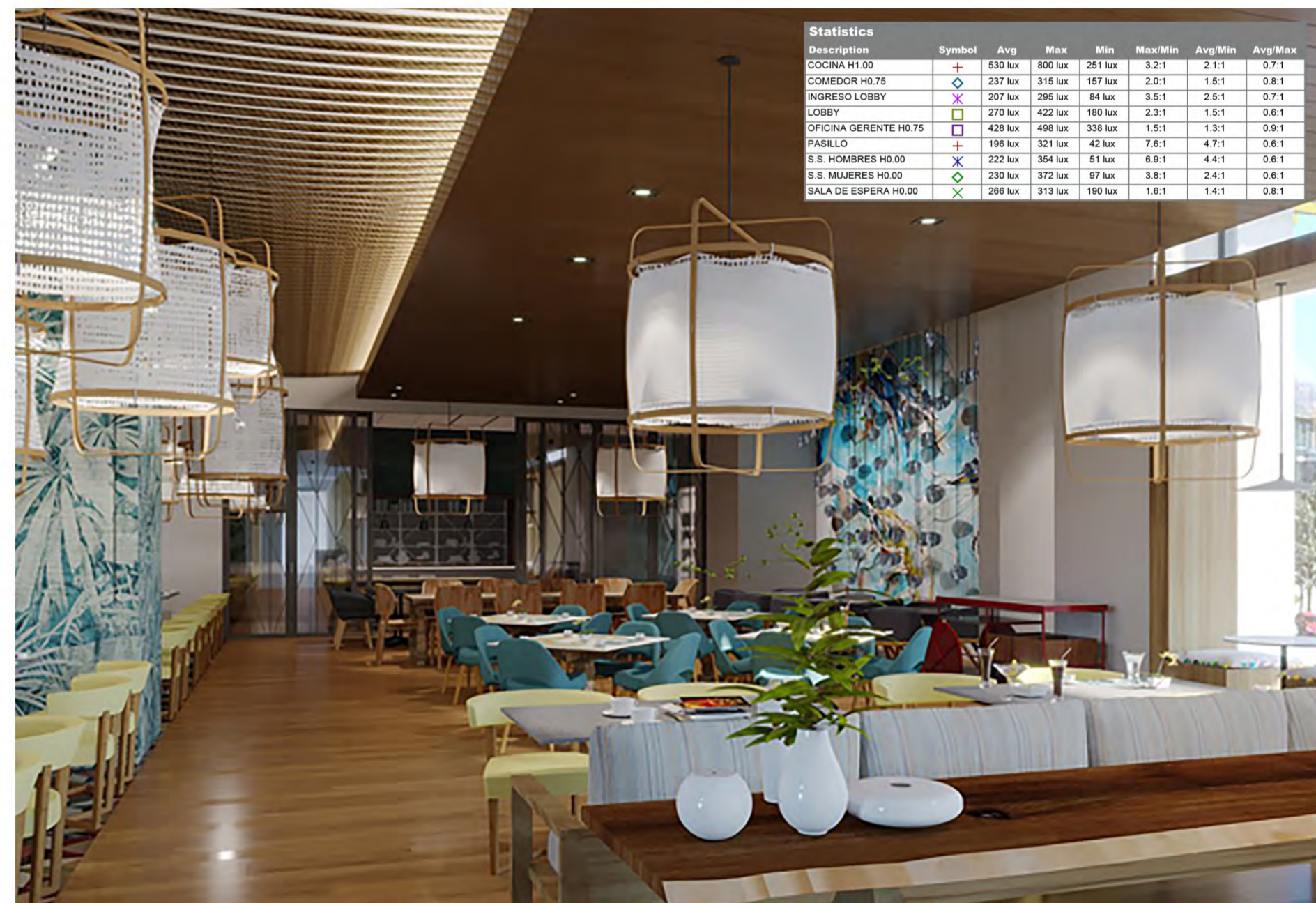


HYATT HOTEL



First floor

Luminaire Schedule											
Symbol	Label	Quantity	Manufacturer	Catalog Number	Description	Lamp	Number Lamps	Filename	Lumens Per Lamp	Light Loss Factor	Wattage
	A	50	HAVELLS SYLVANIA	TRASLAPADA + 2X18W LED	LUMINARIA SOBREPUESTA CON LED	2X18W LED	2	P33780-36-18W-5000K TUBO LED T8.IES	1800	0.8	36
	B	8	HAVELLS SYLVANIA	BIDI HALO 2XPAR30 P37090-36	LUMINARIA WALLPACK DECORATIVA LED, MONTAJE EN PARED	LED 2XPAR30	2	PAR30-E27-120V-6X1W-CW.IES	500	0.8	11.6
	C	108	HAVELLS SYLVANIA	LED DOWNLIGHT 8"	LED DOWNLIGHT, MONTAJE A 3.25M	LED	1	Syl-highter LED 220 Samsung 4000K.ies	1800	0.8	21
	D	21	HAVELLS SYLVANIA	LED DOWNLIGHT 4"	LED DOWNLIGHT, MONTAJE A 3.00M, S.S	LED	1	Syl-highter LED 165 Samsung 4000K.ies	650	0.8	9
	E	68	HAVELLS SYLVANIA	ACENTO P25171-36	LED DOWNLIGHT, MONTAJE A 3.00M	MR16 LED	1	GU10 6.5W 36D 120V 3000K (P25777-1).IES	357	0.8	6.5
	G	82	HAVELLS SYLVANIA	APLIQUE LED	LED LUMINARIA DE EXTERIOR, MONTAJE PERGOLA	LED	1	GU10 6.5W 36D 120V 3000K (P25777-1).IES	400	0.8	8
	H	44	HAVELLS SYLVANIA	IVY PANEL LED	LED LUMINARIA DE EMPOTRAR	LED	1	0503-36.ies	6000	0.8	70
	I	9	HAVELLS SYLVANIA S.A.	UL 705 LED 48 4 SMD-2 8400LM-48	LED LUMINARIA DE SOBREPONER	SMD-S2	1	UL 705 LED 48 4 SMD 700mA.ies	8400	0.71	72
	J	19	HAVELLS SYLVANIA	UL 705 LED 48 4 SMD-2 8000LM-48	LED LUMINARIA DE SOBREPONER	SMD-S2	1	0705-01.IES	6000	0.71	50
	O	234	HAVELLS SYLVANIA	MANGUERA LED 1M	MANGUERA LED 3000K	LED	2	P33780-36-18W-5000K TUBO LED T8.IES	440	0.8	25
	U	6	HAVELLS SYLVANIA	UL ARIA LED 96 9960LM	COLGANTE ILUMINACION	SMD 24"	1	UL 517 LED 48 2 700mA SMD RA.ies	9960	0.85	40.48



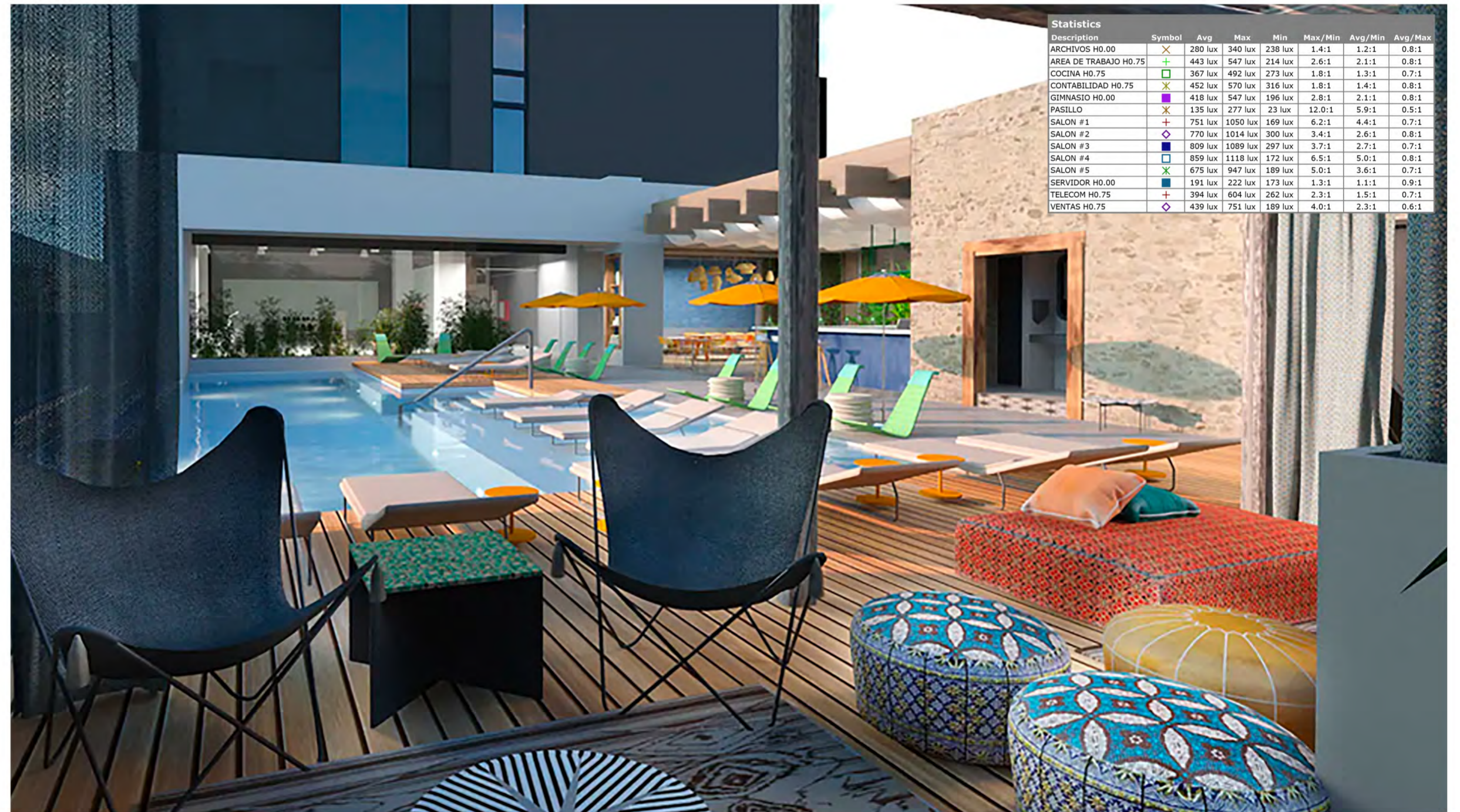
Statistics							
Description	Symbol	Avg	Max	Min	Max/Min	Avg/Min	Avg/Max
COCINA H1.00	+	530 lux	800 lux	251 lux	3.2:1	2.1:1	0.7:1
COMEDOR H0.75	◇	237 lux	315 lux	157 lux	2.0:1	1.5:1	0.8:1
INGRESO LOBBY	×	207 lux	295 lux	84 lux	3.5:1	2.5:1	0.7:1
LOBBY	□	270 lux	422 lux	180 lux	2.3:1	1.5:1	0.6:1
OFICINA GERENTE H0.75	◇	428 lux	498 lux	338 lux	1.5:1	1.3:1	0.9:1
PASILLO	+	196 lux	321 lux	42 lux	7.6:1	4.7:1	0.6:1
S.S. HOMBRES H0.00	×	222 lux	354 lux	51 lux	6.9:1	4.4:1	0.6:1
S.S. MUJERES H0.00	◇	230 lux	372 lux	97 lux	3.8:1	2.4:1	0.6:1
SALA DE ESPERA H0.00	×	266 lux	313 lux	190 lux	1.6:1	1.4:1	0.8:1

HYATT HOTEL

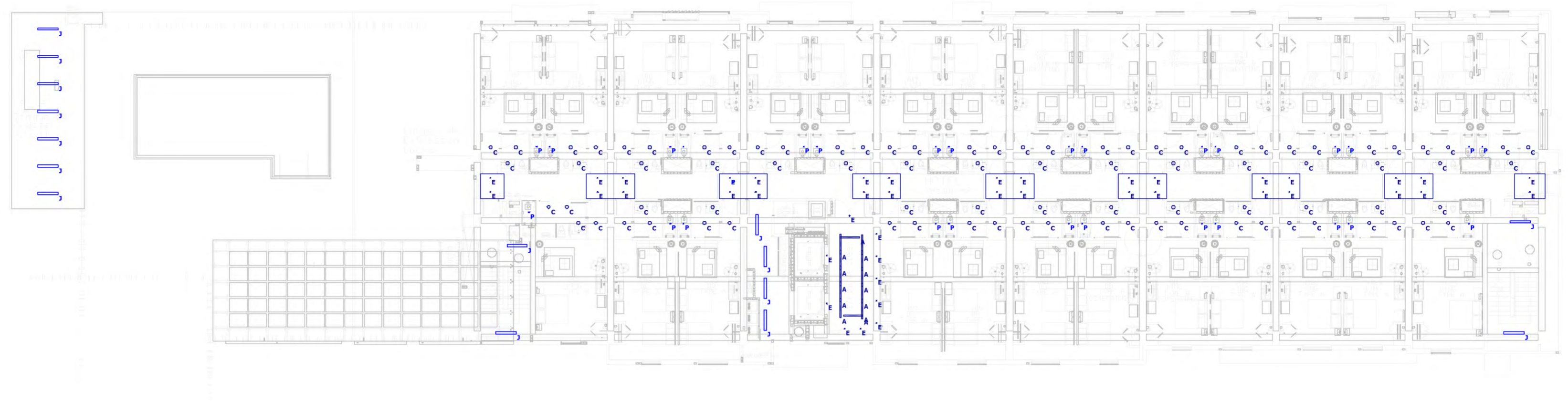


Second floor

Luminaire Schedule											
Symbol	Label	Quantity	Manufacturer	Catalog Number	Description	Lamp	Number Lamps	Filename	Lumens Per Lamp	Light Loss Factor	Wattage
	A	263	HAVELLS SYLVANIA	TRASLAPADA + 2X18W LED	LUMINARIA SOBREPUESTA CON LED	2X18W LED	2	P33780-36-18W-5000K TUBO LED T8.IES	1800	0.8	36
	B	19	HAVELLS SYLVANIA	BIDI HALO 2XPAR30 P37090-36	LUMINARIA WALLPACK DECORATIVA LED, MONTAJE EN COLUMNAS REDONDAS	LED 2XPAR30	2	PAR30-E27-120V-6X1W-CW.IES	500	0.8	11.6
	C	188	HAVELLS SYLVANIA	LED DOWNLIGHT 8"	LED DOWNLIGHT, MONTAJE A 3.25M	LED	1	Syl-lighter LED 220 Samsung 4000K.IES	1800	0.8	21
	D	14	HAVELLS SYLVANIA	LED DOWNLIGHT 4"	LED DOWNLIGHT, MONTAJE A 3.00M, S.S	LED	1	Syl-lighter LED 165 Samsung 4000K.IES	650	0.8	9
	E	24	HAVELLS SYLVANIA	ACENTO P25171-36	LED DOWNLIGHT, MONTAJE A 3.00M	MR16 LED	1	GU10 6.5W 360 120V 3000K (P25777-1).IES	357	0.8	6.5
	F	85	HAVELLS SYLVANIA	UL Rubico LED 24 2 700mA SMD DIF Rubico 2x2	De Empotrar / Iluminacion General	SMD 24"	1	UL Rubico LED 24 2 700mA SMD DIF Rubico 2x2.IES	4700	0.8	45
	G	24	HAVELLS SYLVANIA	APLIQUE LED	LED LUMINARIA DE EXTERIOR, MONTAJE INGRESO LOBBY	MR16 LED	1	GU10 6.5W 360 120V 3000K (P25777-1).IES	400	0.8	8
	J	13	HAVELLS SYLVANIA	705-EO-48-2 2X32	PARA AMBIENTES HUMEDOS	OCTRON Fluorescente 48"	2	0705-01.IES	2900	0.71	55.2
	K	3	HAVELLS SYLVANIA GUATEMALA	P25140-36 MOONLIGHT LED	LUMINARIA DE EXTERIOR PEATONAL	82W LED	1	Innova 3W LED.IES	6320	0.8	82
	L	10	HAVELLS SYLVANIA GUATEMALA	STEP LIGHT LED	STEP LIGHT, MONTAJE 0.5M	9W LED	1	GU10 6.5W 360 120V 3000K (P25777-1).IES	650	0.8	9
	M	8	HAVELLS SYLVANIA GUATEMALA	P24325-36 PETIT LED + P37078 FUENTE + M0000810 CONTROLADOR	DOWNLIGHT LED POOL, -2M MAX	11.5W LED	1	GU10 6.5W 360 120V 3000K (P25777-1).IES	600	0.8	11.5
	O	4	HAVELLS SYLVANIA GUATEMALA	P24852-36 1M lineal por cuantificación	CINTA LED 1M	LED	1	18W-5000K TUBO LED T8.IES	300	0.8	22
	S	8	HAVELLS SYLVANIA GUATEMALA	P24173-36 RUBI LED	LUMINARIA DE EXTERIOR PEATONAL	8W LED	1	Innova 3W LED.IES	230	0.8	8



HYATT HOTEL



Third floor

Luminaire Schedule											
Symbol	Label	Quantity	Manufacturer	Catalog Number	Description	Lamp	Number Lamps	Filename	Lumens Per Lamp	Light Loss Factor	Wattage
	A	12	HAVELLS SYLVANIA	TRASLAPADA + 2X18W LED	LUMINARIA SOBREPUESTA CON LED	2X18W LED	2	P33780-36-18W-5000K TUBO LED T8.IES	1800	0.8	36
	C	85	HAVELLS SYLVANIA	LED DOWNLIGHT 8"	LED DOWNLIGHT, MONTAJE A 3.25M	LED	1	Syl-lighter LED 220 Samsung 4000K.ies	1800	0.8	21
	E	42	HAVELLS SYLVANIA	ACENTO P25171-36	LED DOWNLIGHT, MONTAJE A 3.00M	MR16 LED	1	GU10 6.5W 36D 120V 3000K (P25777-1).IES	357	0.8	6.5
	J	15	HAVELLS SYLVANIA	705-LED 6000LM	PARA AMBIENTES HÚMEDOS	LED	1	0705-01.IES	6000	0.71	55.2
	P	28	HAVELLS SYLVANIA	ACENTO CON IP PARA DUCHAS	LED DOWNLIGHT	MR16 LED	1	GU10 6.5W 36D 120V 3000K (P25777-1).IES	357	0.8	6.5

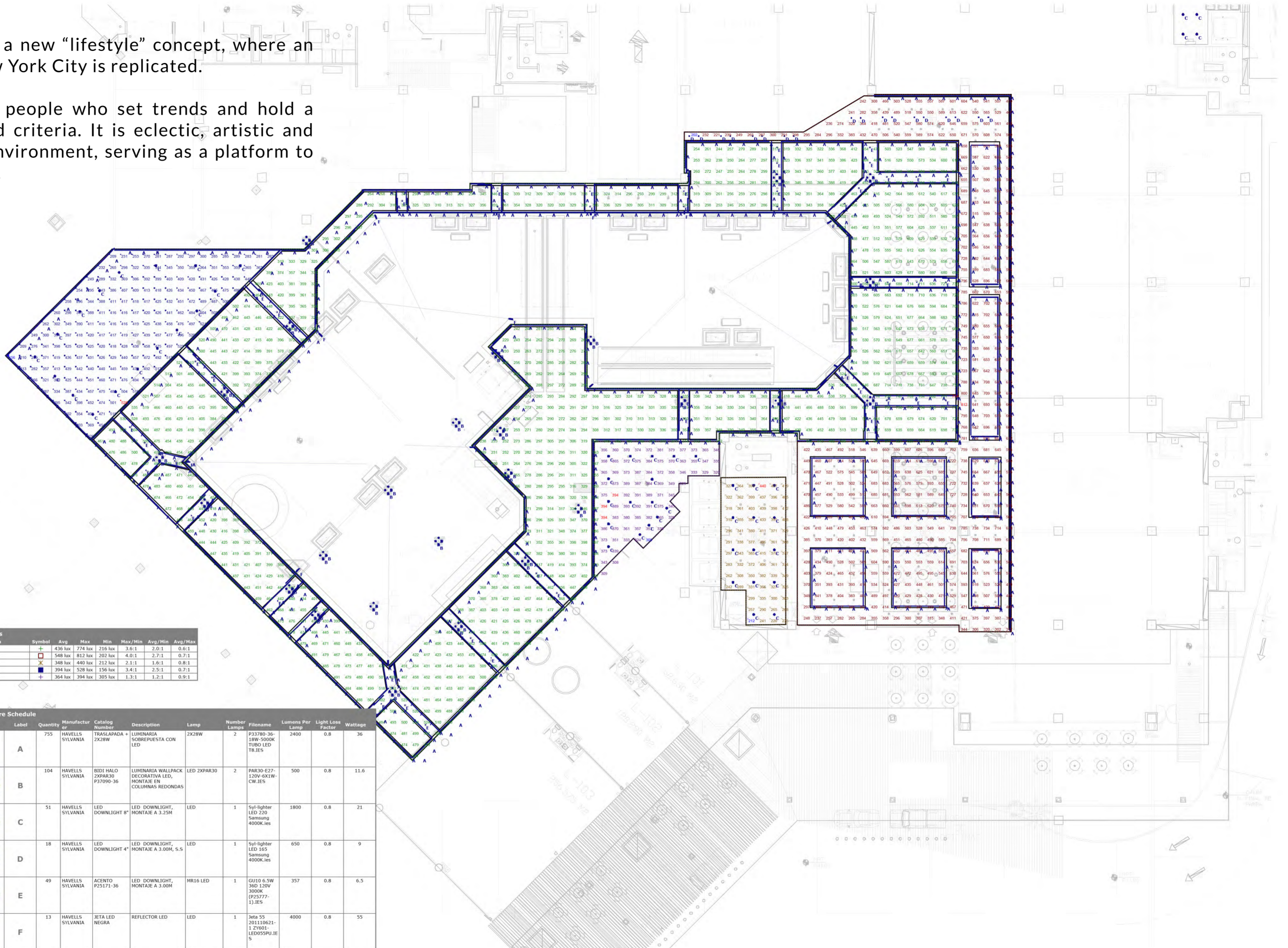


SOHO CASCADAS offers a new “lifestyle” concept, where an area similar to SOHO New York City is replicated.

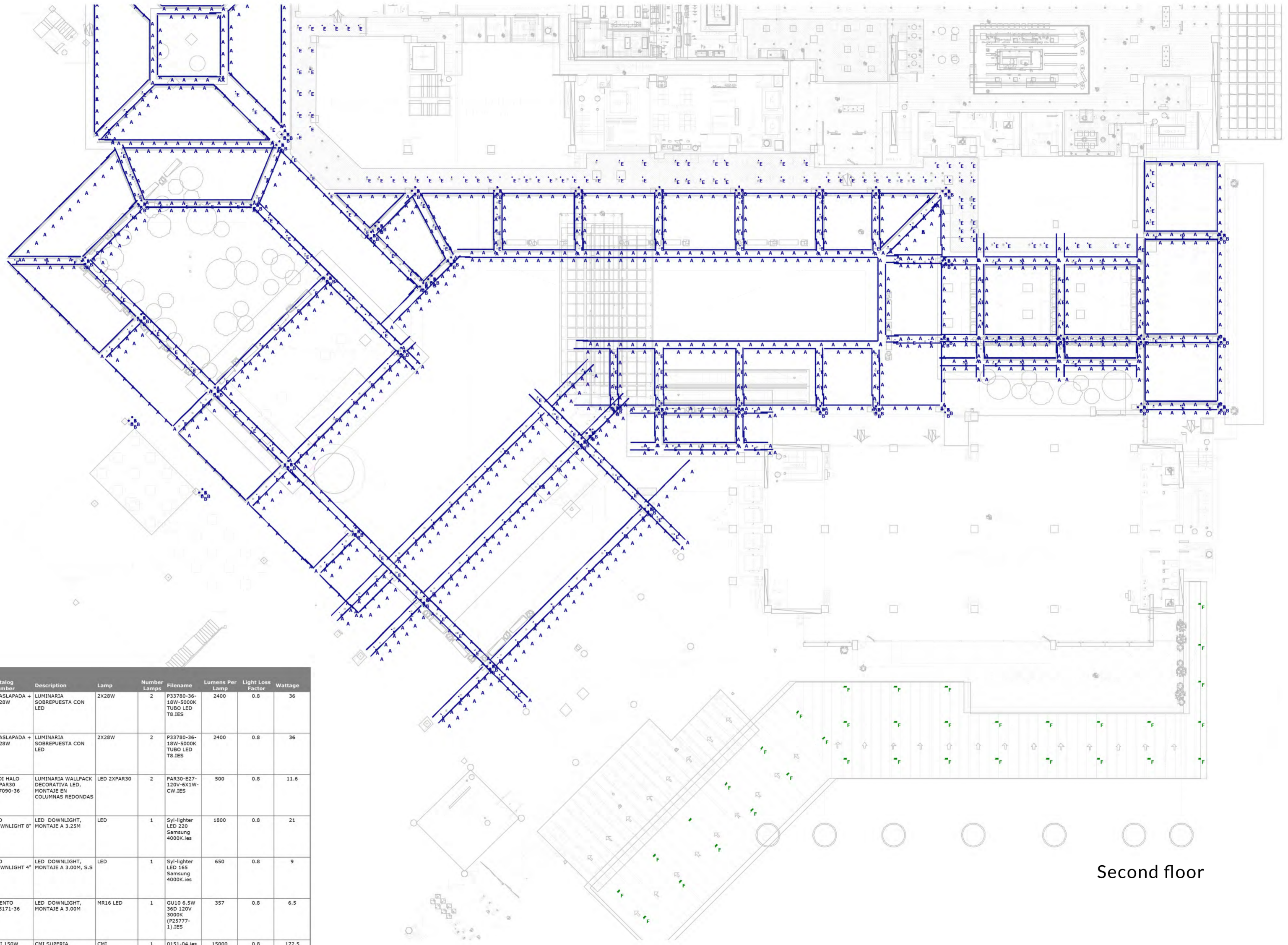
Its design is for modern people who set trends and hold a demanding taste in broad criteria. It is eclectic, artistic and cultural in an exclusive environment, serving as a platform to the urban style of the city.

Description	Symbol	Avg	Max	Min	Max/Min	Avg/Min	Avg/Max
PASILLO 1	+	436 lux	774 lux	216 lux	3.6:1	2.0:1	0.6:1
PASILLO 2	□	548 lux	812 lux	202 lux	4.0:1	2.7:1	0.7:1
PASILLO 3	×	348 lux	440 lux	212 lux	2.1:1	1.6:1	0.8:1
PASILLO 4	■	394 lux	528 lux	156 lux	3.4:1	2.5:1	0.7:1
PASILLO 5	+	364 lux	394 lux	305 lux	1.3:1	1.2:1	0.9:1

Symbol	Label	Quantity	Manufacturer	Catalog Number	Description	Lamp	Number Lamps	Filename	Lumens Per Lamp	Light Loss Factor	Wattage
	A	755	HAVELLS SYLVANIA	TRASLAPADA + 2X28W	LUMINARIA SOBREPUESTA CON LED	2X28W	2	P33780-36-18W-5000K TUBO LED T8.IES	2400	0.8	36
⊙	B	104	HAVELLS SYLVANIA	BIDI HALO 2XP30-36 P37090-36	LUMINARIA WALLPACK DECORATIVA LED, MONTAJE EN COLUMNAS REDONDAS	LED 2XP30-36	2	PAR30-E27-120V-041W-CW.IES	500	0.8	11.6
⊗	C	51	HAVELLS SYLVANIA	LED DOWNLIGHT 8"	LED DOWNLIGHT, MONTAJE A 3.25M	LED	1	Syl-lighter LED 230 Samsung 4000K.IES	1800	0.8	21
⊙	D	18	HAVELLS SYLVANIA	LED DOWNLIGHT 4"	LED DOWNLIGHT, MONTAJE A 3.00M, S.S	LED	1	Syl-lighter LED 165 Samsung 4000K.IES	650	0.8	9
⊙	E	49	HAVELLS SYLVANIA	ACENTO P25171-36	LED DOWNLIGHT, MONTAJE A 3.00M	MR16 LED	1	GU10 6.5W 36D 120V 3000K (P25777-1).IES	357	0.8	6.5
▮	F	13	HAVELLS SYLVANIA	JETA LED NEGRA	REFLECTOR LED	LED	1	Jeta 55 201110621-1 216001-LED055RPL.IE S	4000	0.8	55



SOHO MALL



Second floor

Luminaire Schedule											
Symbol	Label	Quantity	Manufacturer	Catalog Number	Description	Lamp	Number Lamps	Filename	Lumens Per Lamp	Light Loss Factor	Wattage
	A	0	HAVELLS SYLVANIA	TRASLAPADA + 2X28W	LUMINARIA SOBREPUESTA CON LED	2X28W	2	P33780-36-18W-5000K TUBO LED T8.IES	2400	0.8	36
	A	1410	HAVELLS SYLVANIA	TRASLAPADA + 2X28W	LUMINARIA SOBREPUESTA CON LED	2X28W	2	P33780-36-18W-5000K TUBO LED T8.IES	2400	0.8	36
	B	192	HAVELLS SYLVANIA	BIDI HALO 2XPAR30 P37090-36	LUMINARIA WALLPACK DECORATIVA LED, MONTAJE EN COLUMNAS REDONDAS	LED 2XPAR30	2	PAR30-E27-120V-6X1W-CW.IES	500	0.8	11.6
	C	0	HAVELLS SYLVANIA	LED DOWNLIGHT 6"	LED DOWNLIGHT, MONTAJE A 3.25M	LED	1	Syl-lighter LED 220 Samsung 4000K.ies	1800	0.8	21
	D	0	HAVELLS SYLVANIA	LED DOWNLIGHT 4"	LED DOWNLIGHT, MONTAJE A 3.00M, S.S	LED	1	Syl-lighter LED 165 Samsung 4000K.ies	650	0.8	9
	E	329	HAVELLS SYLVANIA	ACENTO P25171-36	LED DOWNLIGHT, MONTAJE A 3.00M	MR16 LED	1	GU10 6.5W 360 120V 3000K (P25777-1).IES	357	0.8	6.5
	F	34	HAVELLS SYLVANIA	CM1 150W	CM1 SUPERIA	CM1	1	0151-04.ies	15000	0.8	172.5

SOHO MALL



Renders before remodelation

SOHO MALL



Photos after remodelation

LIGHTING DESIGN
INTERIOR DESIGN
ARCHITECTURE

CONTACT@ZEADESIGNS.COM

213 275 7035

ZEADESIGNS.COM

HIGH PROFICIENCY

Agi32, Visual Lighting, Relux,
AutoCAD, Sketchup, Vray

ADDITIONAL SKILLS

Revit, Adobe Creative Suite,
G-Suite, MS Office

Native Spanish speaker,
Fully fluent in English

EDUCATION

Bachelor of Architecture
with Interior Design
University Mariano Gálvez,
Guatemala
2008-2012

ABOUT ME

I've worked for seven years in architecture, with a focus in Lighting Design and Interior Design. One of my biggest achievements was to write the lighting regulation that Guatemalan government, and later all of Central America, adopted as its legal standard for lighting levels in new and existing buildings. I've delivered sustainably-built designs based in LEED, IESNA and other international regulations.

I was born in Guatemala, had a great career there, then recently moved here after meeting and marrying my husband, a Los Angeles native.

I love my work! I am an enthusiastic, positive, and dedicated designer looking for a place where I can stretch my talents, collaborate with other highly motivated people and develop into the best architectural designer I can be.

EXPERIENCE

OWNER AND PRINCIPAL / ZEA DESIGNS

January 2017 to Current

- Create architectural and lighting designs for residential and industrial clients

SENIOR LIGHTING DESIGNER / SYLVANIA

April 2014 to January 2017

- Created more than 500 architectural lighting designs—ranging from small to big projects
- Generated more than \$2.4 million in sales per year
- Managed promotional activities, including contact with clients, business development and presentations
- Traveled throughout the country to meet with clients and understand their needs directly
- Lead conferences and training for architects and engineers in universities, large corporations and lighting fairs

LIGHTING DESIGNER FOR CENTRAL AMERICA / HUBBELL LIGHTING

March 2012 to April 2014

- Hired out of school and quickly promoted to lead designer
- Created designs for Central America, Guatemala, El Salvador, Honduras, Costa Rica and Panama
- Lead oral and written presentations
- Reviewed ceiling plans, floor plans, luminaires and energy code compliance forms

APARTMENT CONSTRUCTION SUPERVISOR / PREMIERE PROPERTIES

March 2011 to March 2012

- Supervised approximately 50 contractors for the Murakami building, a 21-level apartment with 4 parking levels
- Supervised approximately 50 contractors for the Gaudi building, a 14-level apartment with 3 parking levels

Thank You